

**RATES & FAQ**  
**2026-2028**



# RATES 1 February 2026 - 31 January 2027

Luxury 6 Sleeper: KLIPBOKKOP								
Rate per guest								Rate for house
1 Guest	2 Guests	3 Guests	4 Guests	5 Guests	6 Guests			Easter & December*
R2815	R4334	R6501	R8668	R9629	R10 590			R10 590 per day

6 Sleepers: BLINKBERG, WABOOMHOEK, PUNTJIE & TAAIBOS								
Rate per guest								Rate for house
1 Guest	2 Guests	3 Guests	4 Guests	5 Guests	6 Guests			Easter & December*
R1679	R2614	R3921	R5228	R6190	R7150			R7150 per day

8 Sleeper: KAREEBOOM								
Rate per guest								Rate for house
1 Guest	2 Guests	3 Guests	4 Guests	5 Guests	6 Guests	7 Guests	8 Guests	Easter & December*
R1443	R2166	R3249	R4332	R5296	R6260	R7224	R8190	R8190 per day

4 Sleepers: PEPERBOOM, OLIENHOUT & KAMFERBOOM								
Rate per guest								Rate for house
1 Guest	2 Guests	3 Guests	4 Guests					Easter & December*
R1203	R1878	R2238	R2600					R2600 per day

2 Sleeper: LEEUSTERT								
Rate per guest								Rate for house
1 Guest	2 Guests							Easter & December*
R1160	R1785							R1785 per day

Luxury 2 Sleeper: UNDER CANVAS HIDEAWAYS (Orion, Scorpius & Crux)								
Rate per guest								Rate for house
1 Guest	2 Guests							Easter & December*
R2340	R3600							R3600 per day

A **minimum of 2 nights** must be booked on **weekends** (Friday night and Saturday night).  
 Total amount of nights for a **long weekend** must be booked on long weekends.  
 \*Full House Rate applies Easter weekend and December holidays (1 Dec 2026 – 3 Jan 2027).



## RATES 1 February 2027 - 31 January 2028

### Luxury 6 Sleeper: KLIPBOKKOP

Rate per guest							Rate for house	
1 Guest	2 Guests	3 Guests	4 Guests	5 Guests	6 Guests			Easter & December*
R2956	R4551	R6836	R9101	R10 110	R11 120			R11 120 per day

### 6 Sleepers: BLINKBERG, WABOOMHOEK, PUNTJIE & TAAIBOS

Rate per guest							Rate for house	
1 Guest	2 Guests	3 Guests	4 Guests	5 Guests	6 Guests			Easter & December*
R1763	R2745	R4117	R5489	R6500	R7500			R7500 per day

### 8 Sleeper: KAREEBOOM

Rate per guest								Rate for house
1 Guest	2 Guests	3 Guests	4 Guests	5 Guests	6 Guests	7 Guests	8 Guests	Easter & December*
R1515	R2274	R3410	R4549	R5561	R6573	R7585	R8600	R8600 per day

### 4 Sleepers: PEPERBOOM, OLIENHOUT & KAMFERBOOM

Rate per guest							Rate for house	
1 Guest	2 Guests	3 Guests	4 Guests					Easter & December*
R1263	R1972	R2350	R2730					R2730 per day

### 2 Sleeper: LEEUSTERT

Rate per guest							Rate for house	
1 Guest	2 Guests							Easter & December*
R1218	R1875							R1875 per day

### Luxury 2 Sleeper: UNDER CANVAS HIDEAWAYS (Orion, Scorpius & Crux)

Rate per guest							Rate for house	
1 Guest	2 Guests							Easter & December*
R2457	R3780							R3780 per day

A **minimum of 2 nights** must be booked on **weekends** (Friday night and Saturday night).

Total amount of nights for a **long weekend** must be booked on long weekends.

\***Full House Rate** applies Easter weekend and December holidays (1 Dec 2027 – 3 Jan 2028).



# IMPORTANT INFORMATION

Mount Ceder is in a wilderness area and is based on a working olive farm. The Old Millhouse is a fully licensed restaurant on site that serves delicious homemade meals. There is no cellphone reception, but we do have satellite phones available as well as free Wi-Fi for guests at the restaurant/reception area. The Groot River is a perennial river meandering through the property, which is accessible and safe for swimming and canoeing. Mount Ceder is ideally located for mountain biking, hiking, walking in nature and bird watching. Due to the very low-light pollution at night, the stars, full moon and Milky Way are bright and clearly visible.

## CHILDREN

Children are welcome and always require adult supervision. Babies and toddlers up to the age of three stay for free. **Children four years and older pay full adult rate.**

## PETS

Pets are **not allowed** at Mount Ceder as we are in a wilderness area where wild animals, such as baboons, and birds of prey naturally occur.

## DRONES

We strive to create a quiet and private environment for our guests where they can relax and unwind without being interrupted. Out of respect for each other's privacy, no drones will be allowed.

## CHECK IN/OUT

Check-in is from **14h00** and check out is at **10h00**. If requested, an earlier check-in, or later check-out time will be considered, subject to availability. Please advise reception when we can expect your arrival.

## DIRECTIONS TO MOUNT CEDER

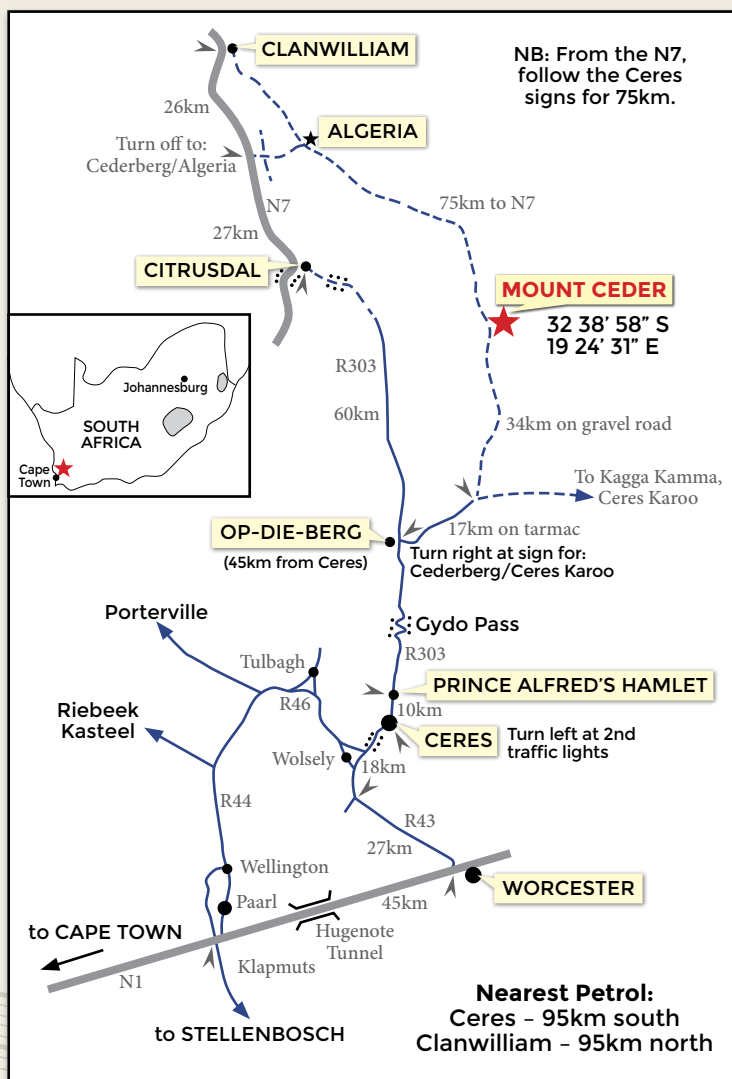
Mount Ceder is an easy 3-hour drive from Cape Town.

- From Cape Town, travel along the N1, through the Huguenot tunnel towards Worcester.
- Before reaching Worcester, turn left onto the R43 towards Ceres.
- Drive into Ceres and take the R303 to Prince Alfred's Hamlet.
- Pass through Prince Alfred's Hamlet and drive up the Cydo pass.
- At **Op-die-Berg** turn **right** onto the R355 road to Kagga Kamma.
- **When the tarmac ends, keep going straight.** Do not turn to Kagga Kamma but keep going straight towards the Cederberg. Follow this gravel road for about 34km and you will reach Mount Ceder on your right.

32 38' 58"S | 19 24' 31"E

Ceres to Mount Ceder – 92 km

Op-die-Berg to Mount Ceder – 51km





# BOOKING INFORMATION

## BOOKING TERMS AND CONDITIONS

- All bookings, amendments and cancellations must be made to us in writing via booking on our website or email and will only be valid once we confirm back in writing.
- STO (standard tour operator) rates are only valid if a registered agent/tour operator does the booking and payment.
- Provisional bookings will be held for 14 days and will be automatically released where no written confirmation or cancellation is received.
- Provisional bookings made within the cancellation period will be held for a period of 24 hours and will be automatically released where no written confirmation or cancellation is received.
- Although every effort is made to keep rates unchanged during the year, all rates and conditions are subject to change at any time.

## GROUP BOOKING PROCEDURE

- Bookings of **two houses or more** will be viewed as a group booking. Mount Ceder does not accept Block Bookings.
- Group bookings must be confirmed with a list of preferred houses when making the reservation.

## CANCELLATION POLICY

A confirmed booking not being amended in writing, the following cancellation policy applies:

Cancellation Fee applies to all confirmed & deposit paid bookings	- 10%
31 – 60 days prior to arrival	- 30%
15 – 30 days prior to arrival	- 50%
0 – 14 days prior to arrival	- 100%
No Shows	- 100%

## PAYMENT CONDITIONS

- All bookings require a **50% deposit** at time of booking to confirm the reservation.
- Payment of the full accommodation account is required **14 days prior to arrival**.
- A 10% non-refundable cancellation fee will be charged on all bookings cancelled before cancellation fee period applies.
- Credit cards accepted are Mastercard and Visa.
- Payment should be made in South African Rands.
- Electronic or direct payments can be made into the following Bank Account:
  - Account Name: Mount Ceder (Pty) Ltd
  - Bank: ABSA Bank
  - Branch: Premium Rural Western Cape
  - Branch code: 632005
  - Account No: 4096986901
  - Swift Code: ABSAZAJJ632005
- Proof of payment must be sent to [reservations@mountceder.co.za](mailto:reservations@mountceder.co.za), and must include the **booking number** as a reference.
- All bank charges are for the guest or tour operators account.

## MOUNT CEDER RESERVATIONS DETAILS

Email: [reservations@mountceder.co.za](mailto:reservations@mountceder.co.za)

Tel: +27 (0)23 004 0848

Post: P.O. Box 81, Koue Bokkeveld, 6836, South Africa.

Website: [www.mountceder.co.za](http://www.mountceder.co.za)

### CUSTOMER PRIVACY POLICY

We shall take all reasonable steps to protect the personal information of users. Personal Information is defined as detailed in the Promotion of Access to Information Act 2 of 2000 (PAIA).

### CARD ACQUIRING & SECURITY

Card transactions will be acquired for Mount Ceder via PayGate (Pty) Ltd, who is the approved payment gateway for all South African Acquiring Banks. DPO PayGate uses the strictest form of encryption, namely Secure Socket Layer 3 (SSL3) and no card details are stored on the website. Users may go to [www.paygate.co.za](http://www.paygate.co.za) to view their security certificate and security policy.

### CUSTOMER DETAILS STORAGE

Customer details will be stored separately from card details which are entered by the client on DPO PayGate's secure site. Mount Ceder does not have access to client's card details. For more detail on DPO PayGate refer to [www.paygate.co.za](http://www.paygate.co.za)

### MERCHANT OUTLET COUNTRY & TRANSACTION CURRENCY

The merchant outlet country at the time of presenting payment options to the cardholder is South Africa. Transaction currency is South African Rand (ZAR).

**Mount Ceder may in its sole discretion, change this agreement or any part thereof at any time without notice.**



## MEALS AT MOUNT CEDER

Serving sumptuous, home-cooked meals, the Old Mill House is the ideal place to begin your day with a hearty breakfast, or to relax at the end of the day with a glass of fine wine from the region and a wholesome, three-course meal. The Old Mill House is a licensed restaurant, serving breakfasts, light lunches and dinners. Evening meals do need to be pre-booked 24 hours in advance and any special dietary requirements made known when booking.

### Breakfast

A Full Mount Ceder breakfast includes Muesli, Yogurt, Fruit Salad, Muffin, Toast, Egg, Bacon, Tomato, Mushrooms and Sausage as well as Coffee/Tea and Fruit juice. Served from 08h00 to 10h00. Bookings essential, preferably 12 hours in advance.

**R195 per person.**

### Light Lunch

Join us in the Old Mill House restaurant from 11h00 to 16h00. No bookings required (A la carte menu).

### Lunch Pack

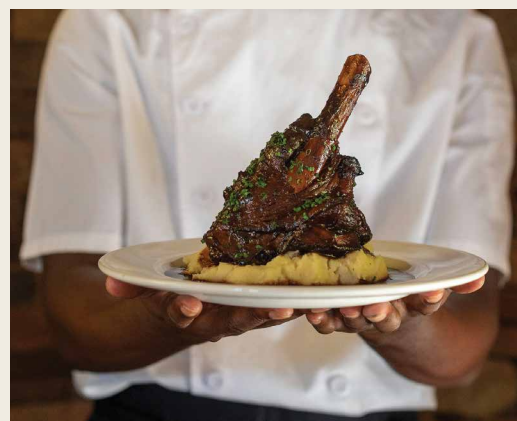
Thinking of taking a drive or a hike? Why don't we pack a lunch for you? A lunch pack includes a wrap, packet or crisps, fruit juice, fruit and a snack bar. **R185 per person.**

### Dinner

Dinner is served at 19h00 and includes a home-cooked, three course set menu (specific dietary requirements must be requested). Our restaurant is fully licensed, and you can purchase wine to accompany your meal. Dinner needs to be pre-booked, preferably 24 hours in advance. **R480 per person.**

### Braai Box

Our very popular 'Adele's Braai Box' can be ordered from reception and includes a selection of meat, *braaibroodjies*, potato and two salads. This is a braai in a box and includes everything needed to cook yourself a nice meal over the fire. Do not forget to pick up some extra firewood and wine at reception. **R320 per person.**



## Enhance your stay...

### Olive & Cheese platter paired with Cederberg Sauvignon Blanc

Enjoy a selection of olives, cheese, dried fruits and nuts, together with a bottle of Cederberg Sauvignon Blanc, in the comfort of your villa upon arrival. **R430**

### Romantic Dinner Table for Two in the Old Mill House restaurant

Enjoy a romantic table setup in the restaurant with your dinner. Includes a chilled bottle of Moët & Chandon Impérial Champagne, Lindt chocolate balls and candles. **R2050**

Please ensure to pre-booked at least 7 days in advance and provide your ETA to reception.



# SELF-GUIDED ACTIVITIES

## HIKING/WALKING ROUTES

### Waterfall hike

- Travel approximately 5.5 km towards Ceres, to the first section of tarmac.
- Go over the hill and at the bottom of the slope, there will be a track down to the right, with a 'No Unauthorised Entry' sign.
- Pass this, follow the road to the left and park in the gravel pit to be found on the corner as the road curves right again.
- Walk back to the track and follow this until you reach the sign 'waterfall ->'.  
• Follow the direction of the sign and continue along the path up the valley (to the left), crossing the stream several times, until you reach the waterfall.
- The route takes approximately 30 minutes one way.

### Hondverbrand viewpoint

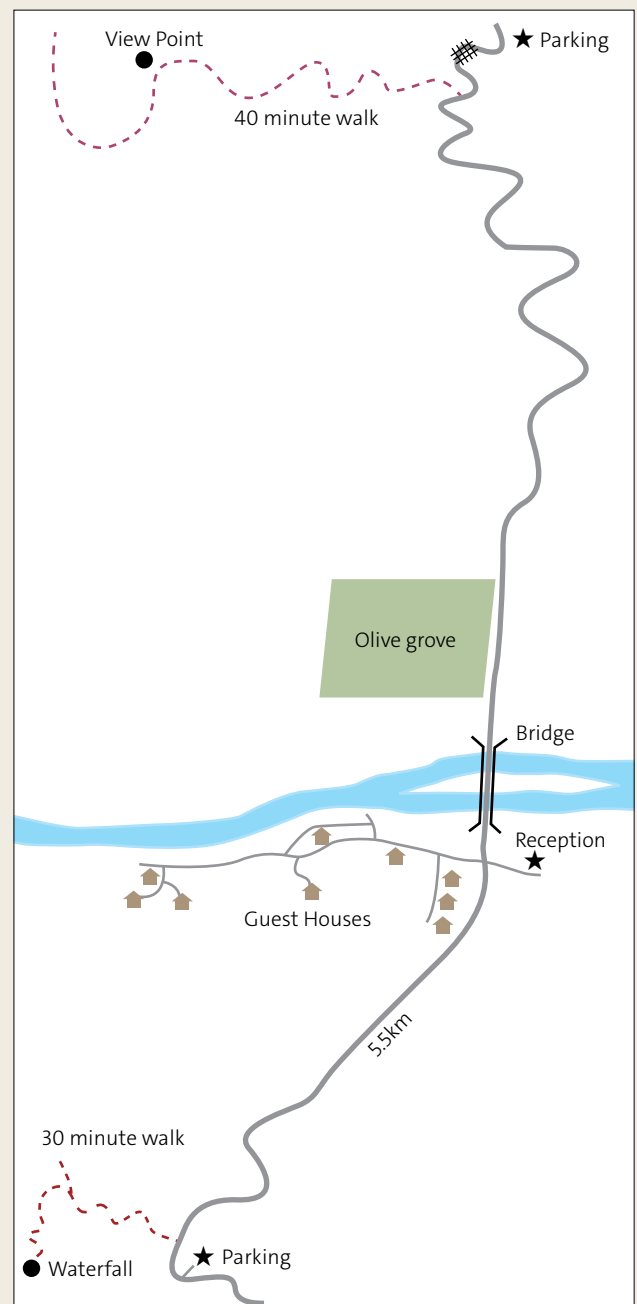
- From reception, turn right out of the gate.
- Cross the bridge and travel up the road past the olive grove on the left.
- Carry on until the top of the pass.
- Park your vehicle in the open area near the cattle grid.
- At the first concrete marker (from Mount Ceder), before the grid, you will find an old track going up to the left, with a 'No Unauthorised Entry' sign.
- Follow this track up the hill until you are near the top.
- This will provide you with a magnificent view of the whole valley.
- Approximately a 40-minute walk one way.
- This walk can be extended, by carrying on further along the track and exploring the area at the top.

## CANOES

Canoes are available for hire. Enquire at reception.

## MOUNTAIN BIKES

Mountain bikes are available to hire. For more details, enquire at reception. Single track and family track map available at reception.



### PLEASE NOTE:

Please return with any papers, plastics, etc. that you go out with. **Do not litter.** • Do not remove any plant material, fossils, etc. that you may find on your walks. • Please always inform reception if you are going on one of the above routes. • Failure to comply with the above may result in these activities being closed in future.



# OLIVE FARM GUIDED ACTIVITIES

## Olive Oil Tasting

Learn about olive oil making and taste up to four different olive oils at our Tasting Room.

**DURATION:** 45 minutes

**COST:** R100 per person

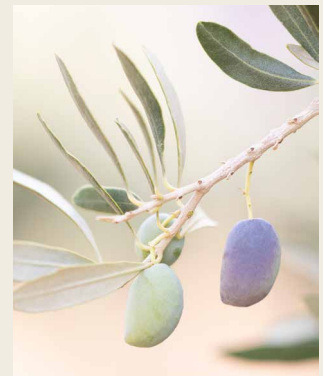
## Olive Grove Tour & Tasting

Tour of the olive grove and working farm, olive oil making and tasting. End the tour with a Sundowner.

**DURATION:** 2 hours

**COST:** R300 per person

To avoid disappointment, book at least seven days in advance. Email [adventures@mountceder.co.za](mailto:adventures@mountceder.co.za)



## Looking for more adventure in the CEDERBERG?

Stadsaal Caves	24 km (permits at park gate)	Algeria	56km
Truitjieskraal	20km (permits at park gate)	Wupperthal	58km
Cederberg Wine	28km	Clanwilliam	86km
Wolfberg Arch	35.5km (permits at Dwarsrivier)	Citrusdal	119km
Wolfberg Cracks	35.5km (permits at Dwarsrivier)		



# ACCOMMODATION & FACILITIES

For more information about the accommodation options at Mount Ceder, please visit our website.

**KLIPBOKKOP** | 6 Sleeper with jacuzzi & wood-fired hot tub  
Our most exclusive house boasts a magnificent 360-degree view of the surrounding landscape. Situated on top of a rocky ridge, our guests enjoy the spectacular view as the Groot River meanders its way down through the valley below.



Klipbokkop

**BLINKBERG** | 6 Sleeper with wood-fired hot tub  
Nestled on the slopes of Tuinskloof ridge, Blinkberg house has a wonderful view of the Klipbokkop mountain range, which can be seen from the large terrace in front.



Blinkberg

**WABOOMHOEK** | 6 Sleeper with wood-fired hot tub  
Waboomhoek has a unique location close to large pools in the perennial Groot River. There is a private spot at the river that is accessible down a path from the front lawn.

**PUNTJIE** | 6 Sleeper with wood-fired hot tub  
Puntjie is situated at the end of the Tuinskloof ridge. This house has a protected outside braai/barbeque nook on the terrace, creating a comfortable outdoor entertainment area to enjoy at any time of the year.



Puntjie

**TAAIBOS** | 6 Sleeper with wood-fired hot tub  
Taaibos is located next to the Groot River and the view from the terrace is completely private. The sunset view of the river in the evening is enchanting.

**KAREEBOOM** | 8 Sleeper with wood-fired hot tub  
Kareeboom is nestled at the foot of the mountains and features a lush, green lawn with a wood-fired hot tub at the back of the house alongside the braai area. In front, a spacious stoep welcomes guests, offering the perfect spot to relax and enjoy the surrounding views.

**LEEUSTERT** | 2 Sleeper with splashpool  
Leeustert is a freshly refurbished shepherd's cottage beneath Blinkberg Mountain, overlooking olive groves and the Groot River. Enjoy the plunge pool and new braai area.

**KAMFERBOOM, PEPERBOOM & OLIENHOUT** | 4 Sleepers  
These three houses are situated next to each other and are within easy walking distance from the restaurant. The view of Blinkberg's stunning red rock face is prominent from the outside entertainment areas.

**UNDER CANVAS HIDEAWAYS** | 2 Sleeper with wood-fired hot tub  
Escape to the Cederberg's Under Canvas Hideaways – eco-luxury tented suites with hot tubs and glass fronts. Wake to birdsong, soak in a wood-fired tub and fall asleep under Orion, Scorpius and the Southern Cross. Low-impact tented suites that blend wilderness stillness with understated luxury. Named after iconic constellations, each riverfront Hideaway offers uninterrupted views of the Milky Way.



Under Canvas Hideaways

